

# THAMESCRAFT

SPECIFICATIONS

EMILIA D



# EMILIA D



## Forth Boxer

Built - 1995  
Dimensions - 18.6m x 6.06m x 1.4m  
Draft - 1.65m  
Clear Deck Area - 14m x 5m  
Hull and deck plating 10mm  
Sheer strake 30mm  
Bollard pull - 6T  
Speed - 8.5 knots

## Deck Format

15T @ 5m/min anchor handling winch  
2 x 25T coupling winches  
Bow roller 30T SWL  
1 x 65KG high holding power anchor  
Plough and detachable 'A' frame (6 cubic/ metre)  
Towing crucifix  
44TM Marine Crane (360 degree) C/W 2T hydraulic winch  
25T flush fitting securing points

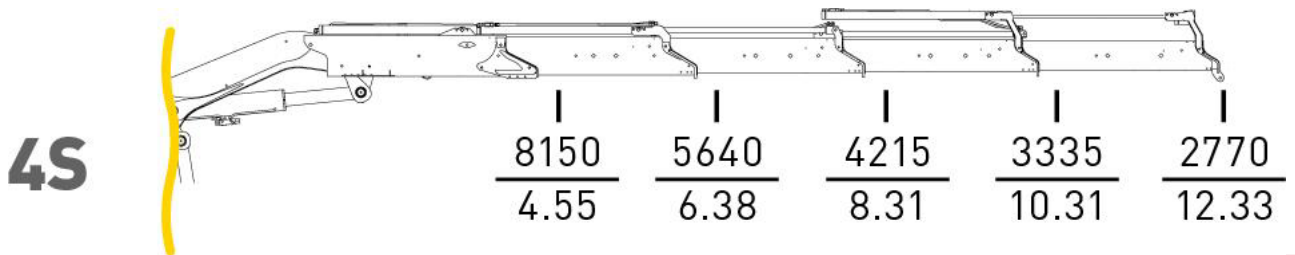
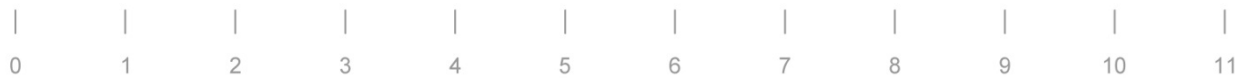
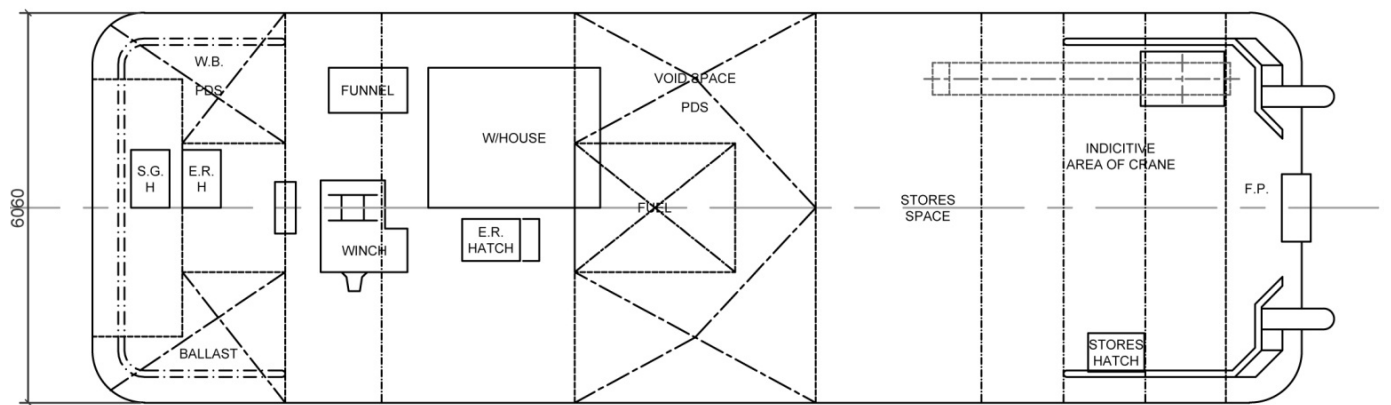
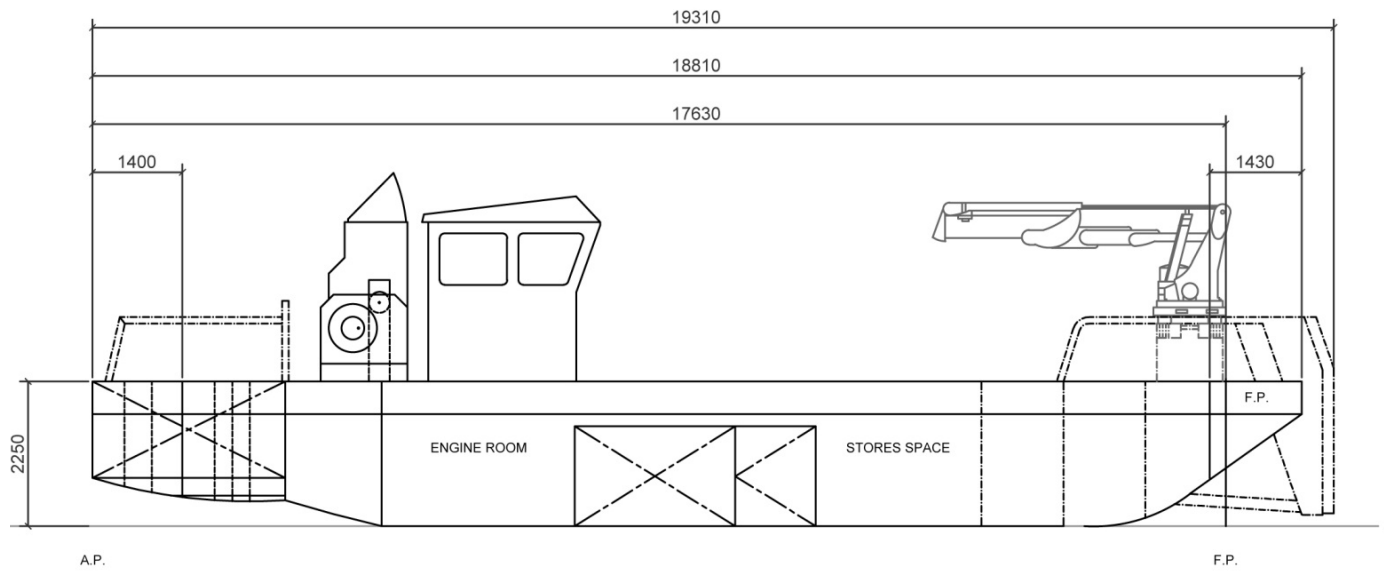
## Main Equipment

Twin Caterpillar 3306 440HP (total) at RPM  
2 fixed pitch propellers in nozzels  
Lister generator LPW4, 14kVA - 220/380v  
UK MCA Workboat Code CAT 3

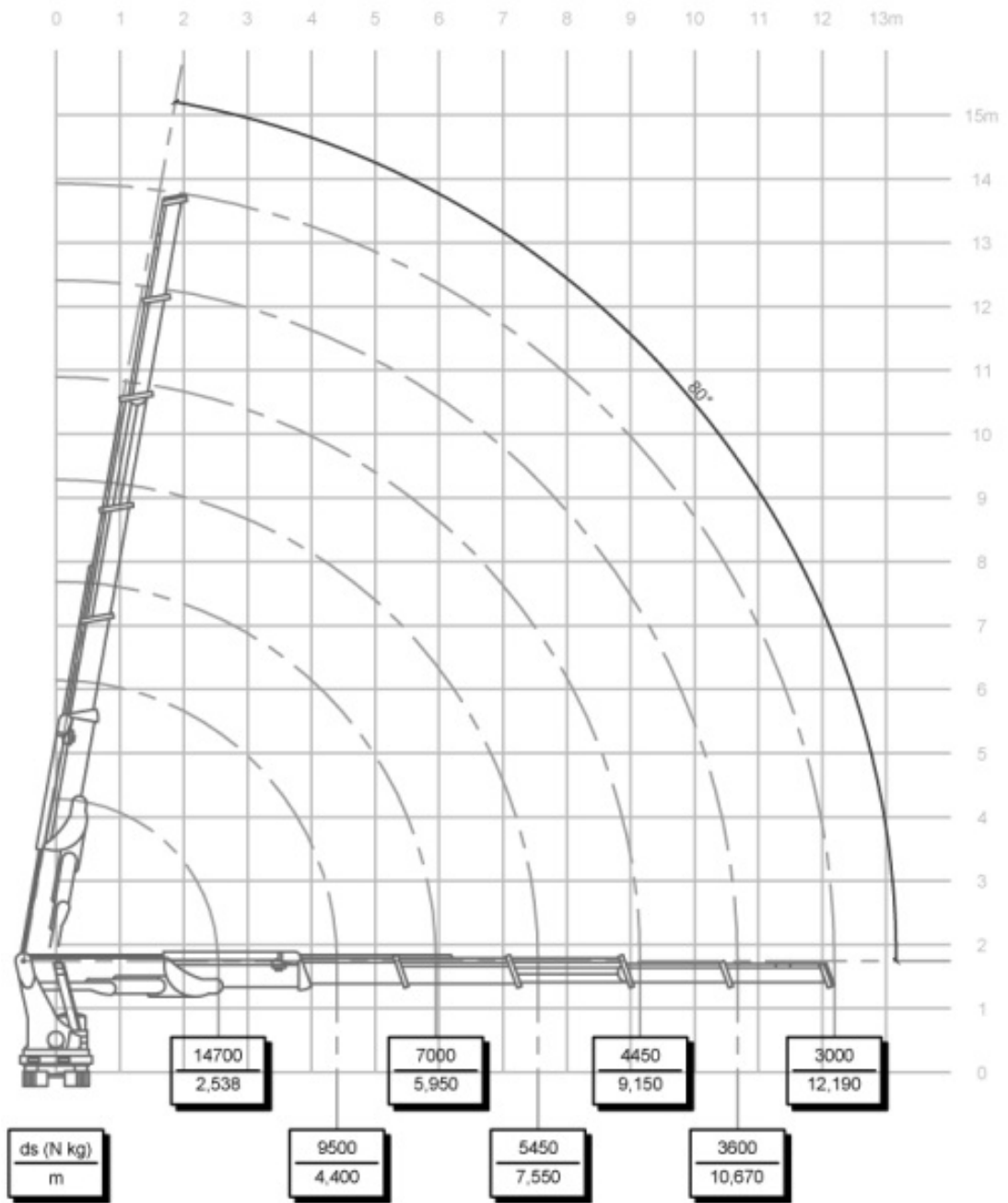
## Nautical & Communication Equipment

500 watt search light  
Furuno FR 1830 radar  
Furuno FR 4300 echo sounder  
Global navigator 310 DGPs  
Cell phone  
VHF





# LOAD DIAGRAM



# HOOK LIFTING DIAGRAM MANUAL EXTENSIONS

