

THAMESCRAFT



Thamescraft
Dry Docking Services

SPECIFICATIONS

JENNY D

JENNY D



GENERAL

Type: Euro Carrier 2209
Built: October 2009
Class: BV I HULL • MACH Pontoon Coastal Waters
Flag: UK, MCA Category 2
Dimensions: 21.6m x 9.04m x 2m (draft)
Displacement: 238 tonne (50% consumables)
GRT: 90.6
IMO number: 9570905
Call Sign: 2CSG7
Port of Registry: Glasgow

TANK CAPACITIES

Fuel Oil:	57m ³	Lube Oil:	1.8m ³
Fresh Water:	30m ³	Hydraulic Oil:	0.9m ³
Dirty Oil:	1.5m ³	Bilge Water:	5.2m ³
Sewage:	1.5m ³		

PERFORMANCE

Bollard Pull: 15 tonne **Speed:** 9 knots

PROPULSION

Main Engines: 2 x Caterpillar C 18
Total Power: 894 bkW (1200 bhp) at 1800 rpm
Propellers: 2 x 1350mm Teignbridge in 'Optima' Nozzles

AUXILLARY EQUIPMENT

Main Generator Sets: 2 x Caterpillar C-4.4 TA
Capacity: 86.3 KVA, 50Hz, 230/400V
Fuel/Water Transfer Pumps: 40m³/hour

DECK

Deck Crane:	Heila HLRM 140-3SL
AH/Towing Winch:	50 tonne Hydrauivision
Tugger Winch:	10 tonne Hydrauivision
Capstan:	3 tonne
Moonpool:	850mm x 650mm
Deck Carrying Capacity:	35 tonne
Clear Deck Space:	110m ³
Bow Roller:	5m x 820mm dia

ACCOMMODATION

Heated and air-conditioned living spaces for six persons, consisting of three double crew cabins, a gally/mess with sanitary facilities and a sewage treatment plant.

NAVIGATION EQUIPMENT:

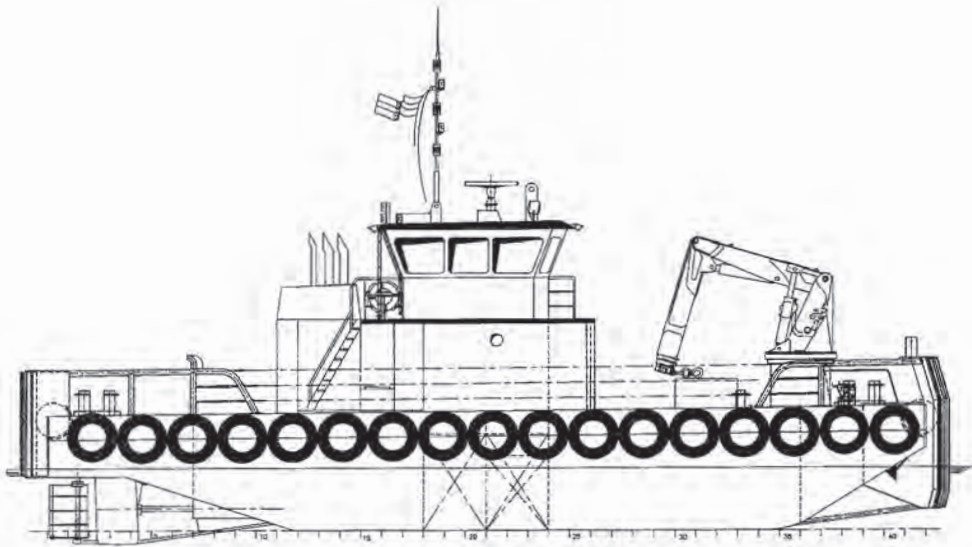
Searchlights:	2 x 250W Sunbeam
Magnetic Compass:	Reflecta 1
Sat. Compass:	Furuno SC-50
RADAR:	1 x Furuno FR-1505 mk3, 1 x Furuno 1832
DGPS:	Furuno GP-150D
Autopilot:	Seapilot 75
AIS:	Furuno FA-50
Echosounder:	Furuno FCV-585
VHF/DSC:	2 x Sailor RT-5022
Handheld VHF:	2 x Jotron TR-20
DSC:	2 x Sailor RT-5022
Navtex:	Furuno NX-700



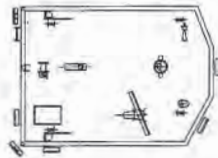


Thamescraft
Dry Docking Services

J E N N Y D



TOP DECK



BRIDGE-DECK



MAIN DECK

