

# THAMESCRAFT



Thamescraft  
Dry Docking Services

**SPECIFICATIONS**

**SOPHIA D**

# S O P H I A D



## GENERAL

**Built:** 1994  
**Call Sign:** 2CSG7  
**MMSI:** 235021489  
**Type of Vessel:** Delta Pusher Tug (Multicat)  
**Builder:** Delta shipyard No.897  
**Basic Functions:** Anchor handling, Towing, Survey, Dredger service, Ship assist, Hose handling  
**Classification:** Workboat code Cat 2, MCA approved, 60 miles from shore

## DIMENSIONS

**Length O.A:** 22.42m      **Draft:** 1.90m  
**Beam:** 8.04m      **Free Deck Space:** 100m<sup>2</sup>  
**Depth of Sides:** 2.50m      **Deck Loading:** 10t/m<sup>2</sup>

## SUPPLY TANKS

**Fuel Oil:** 64.00m<sup>3</sup>-transfer 25m<sup>3</sup>/hour  
**Fresh Water:** 12m<sup>3</sup>-transfer 25m<sup>3</sup>/hour

## PERFORMANCE

**Bollard Pull:** 15 tonnes  
**Speed:** 9.5 knots

## ACCOMMODATION

Comfortable heated & air conditioned for 5 persons in 3 cabins, galley, sanitary facilities etc.

## PROPULSION SYSTEM

**Main Engines:** 2 x GM 12V71 TA  
**Total Power:** 671KW  
**Gearboxes:** 2 x Reintjes 4.5:1  
**Propulsion:** 2 x Fixed pitch propellers in nozzles

## AUXILIARY SYSTEMS

**Generators:** Perkins 60KW, 415 volts  
Caterpillar 113KW, 415 volts

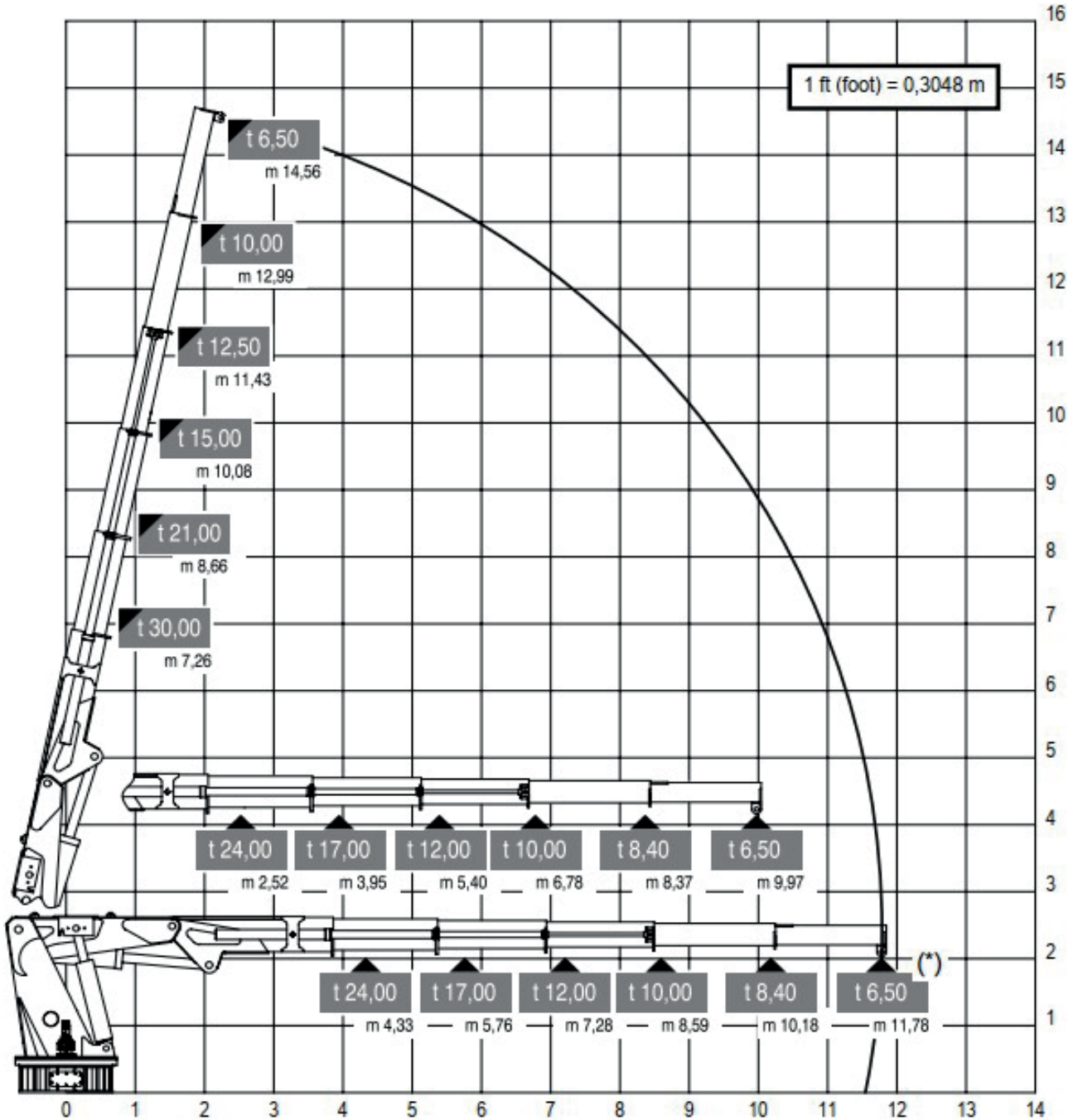
## NAVIGATION & COMMUNICATION

**Radar:** Furuno 1832, Koden MRD 97  
**Compass:** B Cooke (Binnacle)  
**Echo Sounder:** Koden CVS-126  
**GPS:** Furuno GP-32  
**Chart Plotter:** Siewa Barramundi Plus  
**Auto Pilot:** Navitron NT921  
**VHF:** ICOM IC-M421 (DSC), ICOM IC-M411 (DSC), Sailor compact RT2048  
**VHF handheld:** ICOM IC-GM1600E x 2, ICOM IC-M71  
**Navtex:** Furuno NX-300  
**AIS:** Koden KAT-100

## ADDITIONALLY FITTED

Stern "A" frame





00130.14

